

PORT MALABAR UNIT TWENTY FIVE

A RESUBDIVISION OF PORTIONS OF THE FLORIDA INDIAN RIVER LAND COMPANY, PLAT BOOK I, PAGE 165 IN SECTIONS 29, 30, 31 AND 32 TOWNSHIP 29 SOUTH, RANGE 37 EAST CITY OF PALM BAY, BREVARD COUNTY, FLORIDA

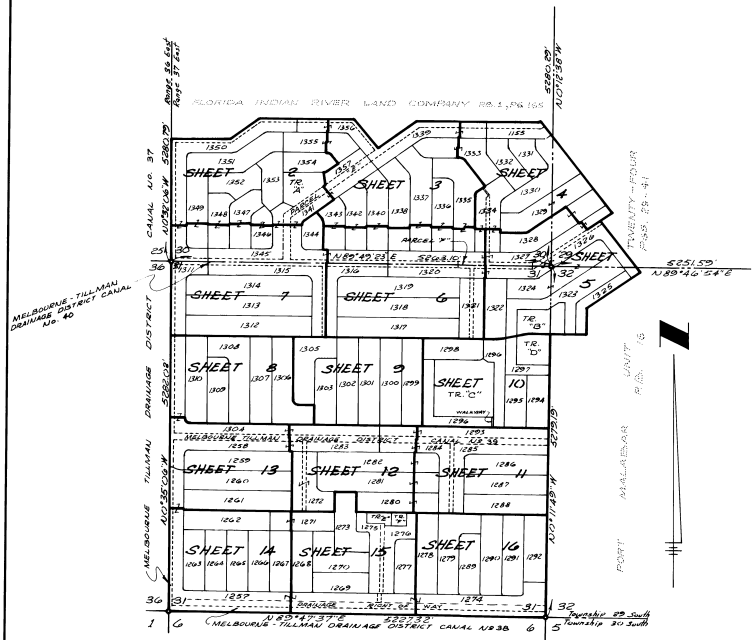
SHEET 1 OF 16 SHEETS

DESCRIPTION

Portions of Lots 7, 8 and 9, Section 29; all of Lots 1 through 8, and portions of Lots 9 through 14, Section 30; all of Lots 1 through 32, Section 31; portions of Lots 8, 9, 24, 25 and 26, Section 32; all of the foregoing being in Township 29 South, Range 37 East as shown on the plat of FLORIDA INDIAN RIVER LAND COMPANY as recorded in Plat Book I, Page 165 of the Public Records of Brevard County, Florida, all of the foregoing being more particularly described as follows:

BEGINNING at the Southeast Corner of Section 31, Township 29 South, Range 37 East; thence S 80°41'37"W along the South Line of said Section 31, 5227.32 feet to the Southwest Corner of said Section 31; thence N 00°35'06"W along the West Line of said Section 31, 5282.02 feet to the Southwest Corner of Section 30, Township 29 South, Range 37 East; thence N 00°32'06"W along the West Line of said Section 30, 1838.38 feet; thence N 80°49'31"E 813.50 feet; thence N 51°54'15"E 523.44 feet; thence N 80°49'23"E 1317.56 feet; thence S 38°05'45"E 530.94 feet; thence N 51°54'15"E 681.57 feet; thence N 80°49'23"E 1666.21 feet; thence N 33°18'36"W 38.82 feet; thence S 36°41'24"E 250 feet; thence S 53°18'36"W 3.55 feet; thence S 36°41'24"E 1450 feet; thence S 53°18'36"W 200 feet; thence S 36°41'24"E 250 feet; thence S 53°18'36"W 984.69 feet; thence S 00°13'06"E 368.32 feet; thence S 80°49'24"W 46.8 feet; thence S 00°13'06"E 477.60 feet to a point on the South Line of Section 32, Township 29 South, Range 37 East; thence S 80°49'24"W along the South Line of said Section 32, 20 feet to the Southeast Corner of aforementioned Section 31 and the **POINT OF BEGINNING**. **LESS** the Melbourne-Tillman Drainage District Canal No. 37, Canal No. 38, Canal No. 39 and Canal No. 40.

All land lying and being in the City of Palm Bay, Brevard County, Florida and containing 892.74 Acres more or less.



LOCATION & KEY MAP

SECTIONS 29, 30, 31 & 32 T TWP. 29 S - RGE. 37 E

SCALE: 1" = 1000'

DRAWN BY - J.R.W.
CHECKED BY - J.B.
APPROVED BY - G.M.

ENGINEERS NOTE

Dimensions on corner lots are to the intersection of block lines extended, unless otherwise shown. All radii are 25 feet, unless otherwise shown. Permanent Reference Monuments are set at all block corners unless otherwise noted. Basis of bearing system is assumed for computation purposes.

JANUARY-1962
ARTHUR L. DAY
CIVIL ENGINEER
MIAMI - FLORIDA

*The Drainage Right of Way running parallel and contiguous to the Melbourne-Tillman Drainage Canal No. 38 is reserved by GENERAL DEVELOPMENT CORPORATION, its successors or assigns, for drainage and utility purposes. Unless otherwise indicated a strip of land 20 feet wide of lot lines abutting to and adjacent to all Canals, Drainage Rights of Way and Melbourne-Tillman Drainage District lands and 10 feet wide of the rear of each lot and 6 feet wide of the sides of each lot is reserved for the installation and maintenance of public utilities and drainage facilities, with the following exceptions: (1) side lot lines lying adjacent to streets shall contain no easements and where more than one lot is intended as a building site, or where parts of one or more lots are intended as a building site, the outside boundaries of said building site shall carry said side easements. The express purposes of this plat are: (1) to abandon, close, vacate and discontinue for public use all Rights as shown on the above described plat of FLORIDA INDIAN RIVER LAND COMPANY lying within the boundaries of the above described property; (2) to redivide the above described property into lots, blocks and tracts as shown on the attached plat.

IN WITNESS WHEREOF: The MELBOURNE - TILLMAN DRAINAGE DISTRICT has caused these presents to be executed by its Board of Supervisors and attested by its Secretary, this 17th day of March, A.D. 1962.

MELBOURNE - TILLMAN DRAINAGE DISTRICT
Attest *Emilie A. House* Secretary
By *Lock Davidson* Lock Davidson Supervisor
Robert D. Maxwell Robert D. Maxwell Supervisor
Frank L. Platt Frank L. Platt Supervisor

STATE OF FLORIDA: THIS IS TO CERTIFY, That on January 17, 1962, before me an officer duly authorized to take acknowledgments in the State and County aforesaid, personally appeared Lock Davidson, Robert D. Maxwell and Frank L. Platt Supervisors and Emilie A. House Secretary of the above named corporation, incorporated under the laws of the State of Florida, a Florida Corporation, to me known to be the individuals and officers described in and who executed the foregoing Dedication and severally acknowledged the execution thereof to be their free act and deed as such officers thereto duly authorized; and that the said dedication is the act and deed of said corporation. IN WITNESS WHEREOF, I have hereto set my hand and seal on the above date:

Rebekah L. Jennings
NOTARY PUBLIC
My Commission Expires 12-28-63

PLAT BOOK 16 AND PAGE 68

DEDICATION

KNOW ALL MEN BY THESE PRESENTS, That the Corporation named below, being the owner in fee simple of the lands described in the foregoing caption to this plat, hereby dedicates said lands and plat for the uses and purposes therein expressed and dedicated the Streets, Avenues, Boulevards, Drives, Roads, Walkways & Driveways, Easements, and other things therein mentioned to the use of the public. IN WITNESS WHEREOF, has caused these presents to be signed and attested to by the officers named below and its corporate seal to be affixed hereto on this 17th day of March, 1962.

GENERAL DEVELOPMENT CORPORATION
By *H.A. Years* President
Attest: *E.L. Dymas* Secretary Treasurer

STATE OF FLORIDA COUNTY OF DADE
THIS IS TO CERTIFY, That on March 28, 1962, before me, an officer duly authorized to take acknowledgments in the State and County aforesaid, personally appeared H.A. Years and E.L. Dymas, respectively President and Secretary Treasurer of the above named corporation incorporated under the laws of the State of Florida, to me known to be the individuals and officers described in and who executed the foregoing Dedication and severally acknowledged the execution thereof to be their free act and deed as such officers thereto duly authorized; and that the official seal of said corporation is duly affixed thereto; and that the said Dedication is the act and deed of said corporation.

IN WITNESS WHEREOF, I have hereto set my hand and seal on the above date.

Sharon S. Moore
NOTARY PUBLIC
My Commission Expires MARCH 9, 1966

CERTIFICATE OF SURVEYOR

KNOW ALL MEN BY THESE PRESENTS, That the undersigned, being a licensed and registered land surveyor, does hereby certify that on January 17, 1962, he completed the survey of the lands as shown in the foregoing plat, that said plat is a correct representation of the lands therein described and platted; that permanent reference monuments have been placed as shown thereon as required by Chapter 177, Florida Statutes; and that said land is located in Brevard County, Florida. Dated January 30, 1962.

Richard L. Platt Registration No. 1233
Notary Public, State of Florida

CERTIFICATE OF APPROVAL BY MUNICIPALITY

THIS IS TO CERTIFY, That on 17 MAY 1962, the Council of the City of Palm Bay approved the foregoing plat.

Arthur L. Day Mayor.
ATTEST: _____
CITY CLERK.

CERTIFICATE OF APPROVAL BY BOARD OF COUNTY COMMISSIONERS

THIS IS TO CERTIFY, That on the foregoing plat was approved by the Board of County Commissioners of Brevard County, Florida.

Attest: _____ Chairman of the Board.
Clerk of the Board.
Approved _____ County Engineer

CERTIFICATE OF APPROVAL BY ZONING COMMISSION

THIS IS TO CERTIFY, That on the foregoing plat was approved by the Zoning Commission of the above Municipality approved the foregoing plat.

Zoning Director.

CERTIFICATE OF CLERK

I HEREBY CERTIFY, That I have examined the foregoing plat and find that it complies in form with all the requirements of Chapter 177, Florida Statutes, and was filed for record on MAY 18 1962 at 12:15 PM in the City of Palm Bay.

Arthur L. Day
Clerk of the Circuit Court in and for Brevard County, Fla.

PORT MALABAR UNIT TWENTY FIVE

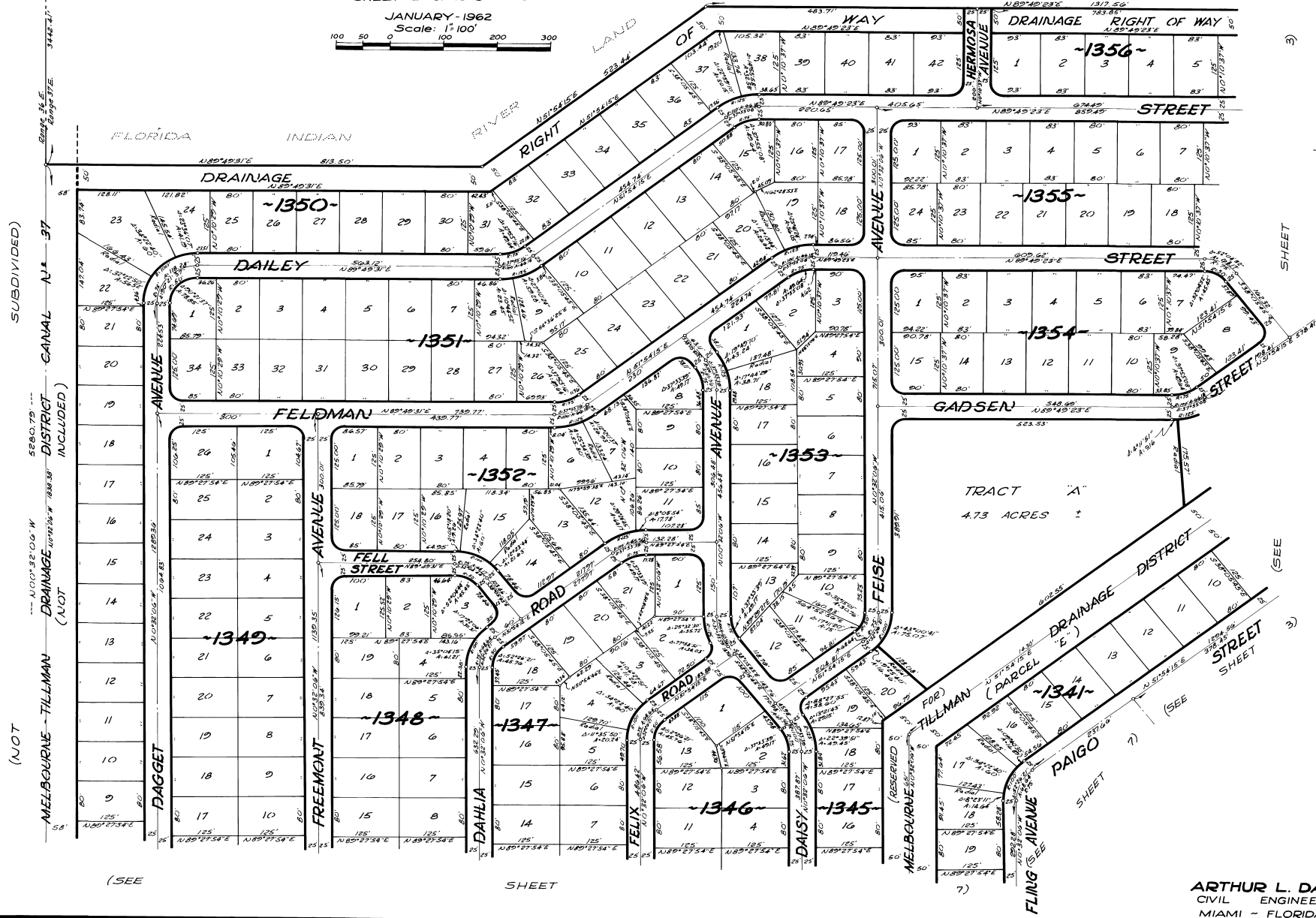
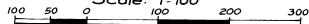
PLAT BOOK 16
PAGE 69

A RESUBDIVISION OF PORTIONS OF THE FLORIDA INDIAN RIVER
LAND COMPANY, PLAT BOOK 1, PAGE 165, IN SECTIONS 29, 30, 31 AND 32,
TOWNSHIP 29 SOUTH, RANGE 37 EAST
CITY OF PALM BAY, BREVARD COUNTY, FLORIDA

SHEET 2 OF 16 SHEETS

JANUARY - 1962

Scale: 1" = 100'



SUBDIVIDED)

CANAL N. 37

DISTRICT INCLUDED)

DRAINAGE (NOT

TILLMAN

(NOT

MELBOURNE

DRAINAGE

(SEE

SHEET

SHEET

(SEE

SHEET

CALCULATED BY - LGO
DRAWN BY - J.R.W.
CHECKED BY - J.B.
APPROVED BY - COK

ARTHUR L. DAY
CIVIL ENGINEER
MIAMI - FLORIDA

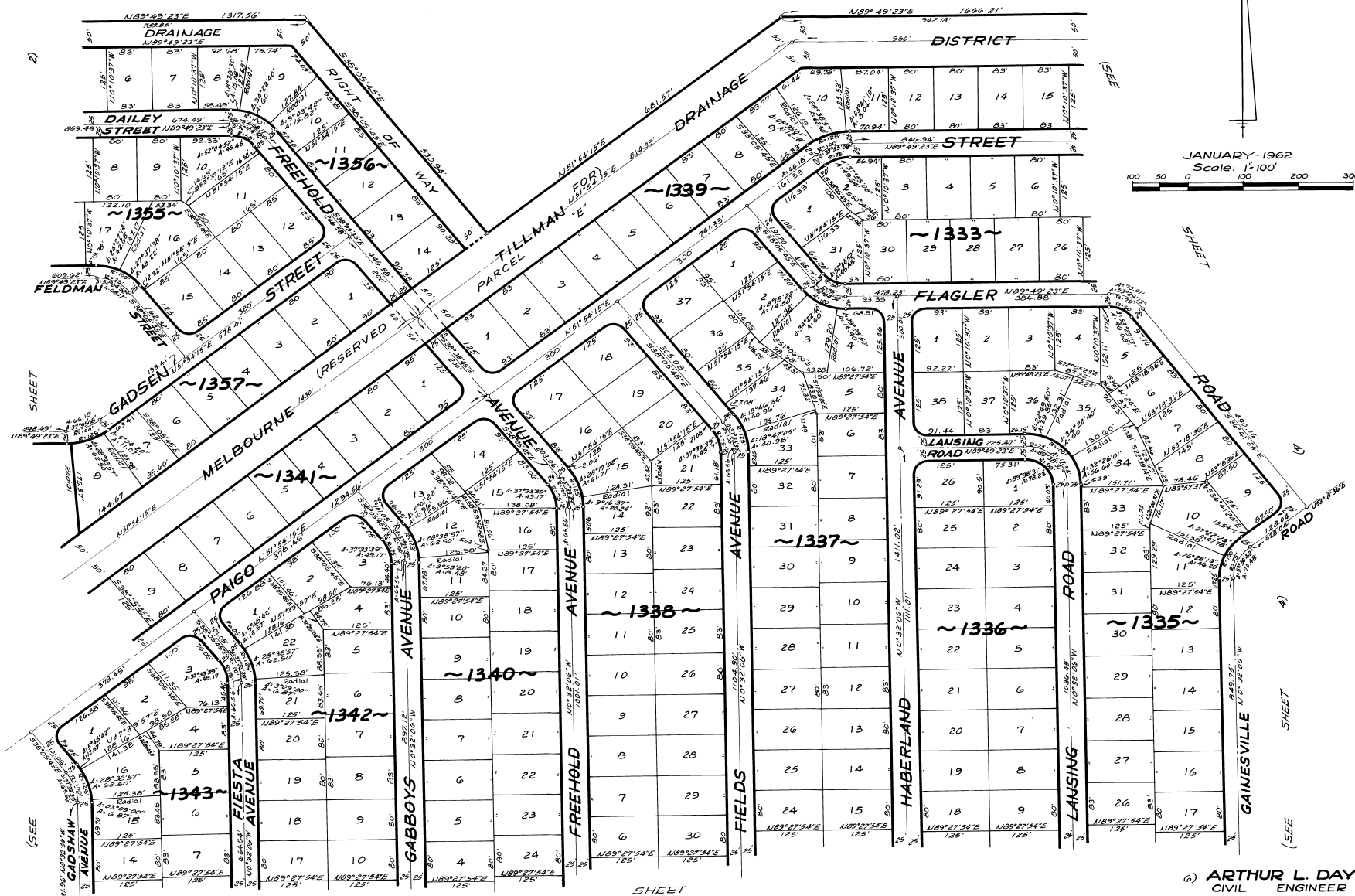
SHEET 2 OF 16 SHEETS
208 LOTS THIS SHEET

PORT MALABAR UNIT TWENTY FIVE

PART BOOK 16
PAGE 70

A RESUBDIVISION OF PORTIONS OF THE FLORIDA INDIAN RIVER
LAND COMPANY, PLAT BOOK 1, PAGE 165, IN SECTIONS 29, 30, 31 AND 32,
TOWNSHIP 29 SOUTH, RANGE 37 EAST
CITY OF PALM BAY, BREVARD COUNTY, FLORIDA

SHEET 3 OF 16 SHEETS
LAND COMPANY P.B. 1 P.G. 165



JANUARY-1962
Scale: 1"=100'
0 100 200 300

CALCULATED BY - R.C.
DRAWN BY - R.C.G.
CHECKED BY - J.B.
APPROVED BY - CGK

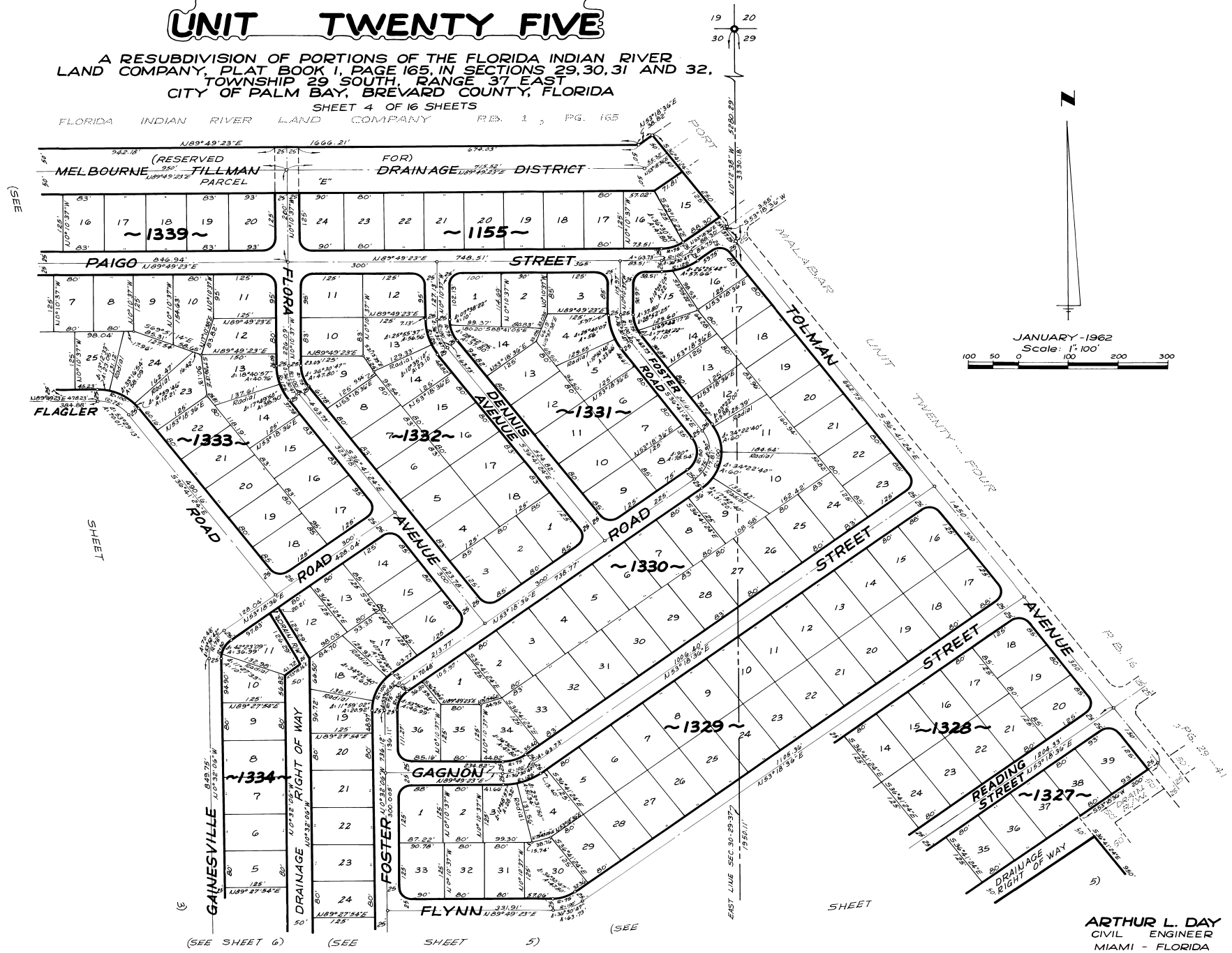
ARTHUR L. DAY
CIVIL ENGINEER
MIAMI - FLORIDA

SHEET 3 OF 16 SHEETS
212 LOTS THIS SHEET

PORT MALABAR UNIT TWENTY FIVE

A RESUBDIVISION OF PORTIONS OF THE FLORIDA INDIAN RIVER
LAND COMPANY, PLAT BOOK 1, PAGE 165, IN SECTIONS 29, 30, 31 AND 32,
TOWNSHIP 29 SOUTH, RANGE 37 EAST
CITY OF PALM BAY, BREVARD COUNTY, FLORIDA

SHEET 4 OF 16 SHEETS
FLORIDA INDIAN RIVER LAND COMPANY P.B. 1, PG. 165



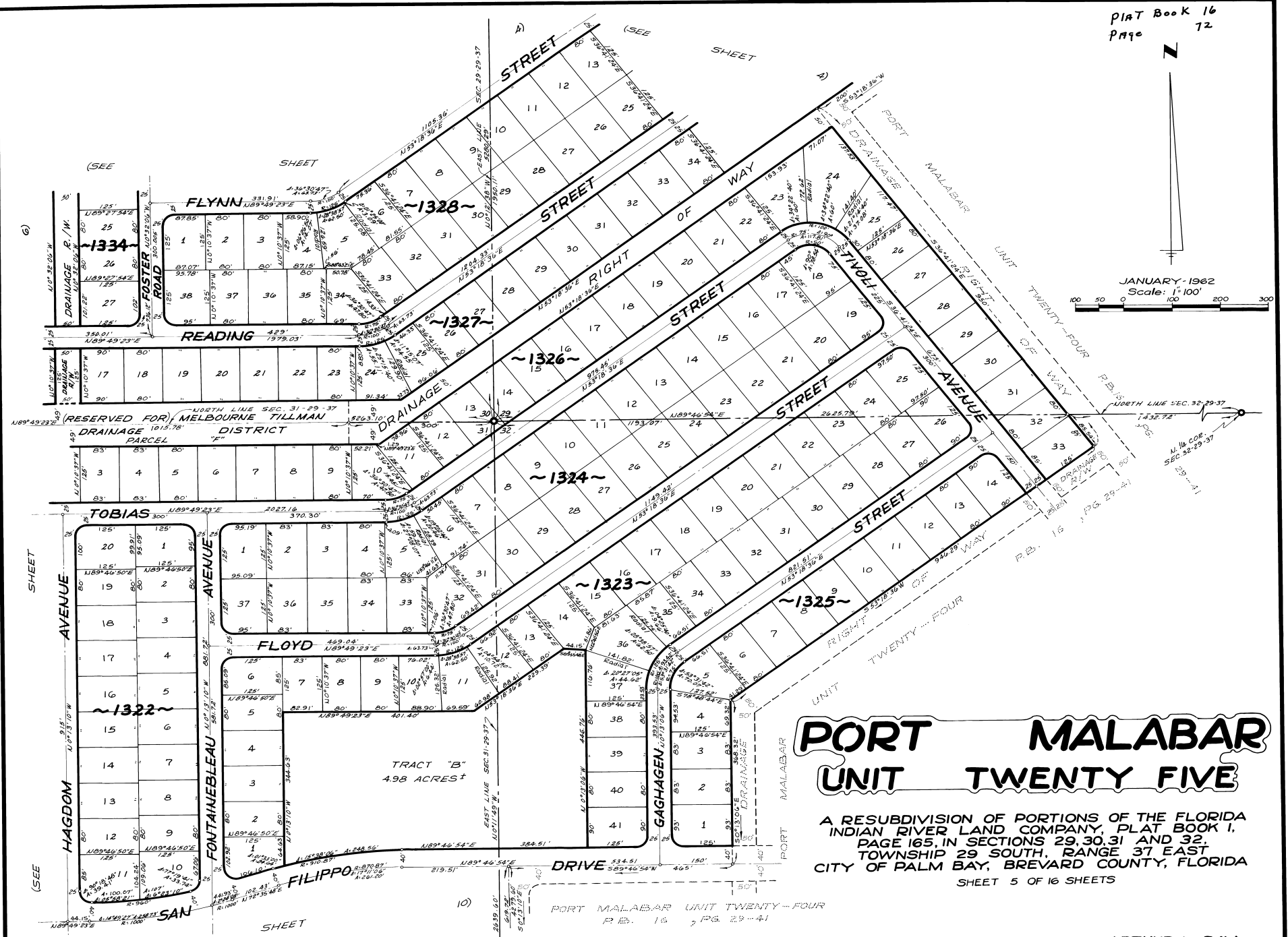
CALCULATED BY - R.C.
DRAWN BY - R.C.G.
CHECKED BY - J.S.
APPROVED BY - C.G.K.

ARTHUR L. DAY
CIVIL ENGINEER
MIAMI - FLORIDA

SHEET 4 OF 16 SHEETS
171 LOTS THIS SHEET



JANUARY, 1962
Scale: 1" = 100'



PORT MALABAR UNIT TWENTY FIVE

A RESUBDIVISION OF PORTIONS OF THE FLORIDA INDIAN RIVER LAND COMPANY, PLAT BOOK 1, PAGE 165, IN SECTIONS 29, 30, 31 AND 32, TOWNSHIP 29 SOUTH, RANGE 37 EAST CITY OF PALM BAY, BREVARD COUNTY, FLORIDA

SHEET 5 OF 16 SHEETS

PORT MALABAR UNIT TWENTY-FOUR
P. B. 16, P. 29-31

ARTHUR L. DAY
CIVIL ENGINEER
MIAMI - FLORIDA

SHEET 5 OF 16 SHEETS
79 LOTS THIS SHEET

CALCULATED BY- RCG
DRAWN BY- RCG
CHECKED BY- JPB
APPROVED BY- CGK

PORT MALABAR UNIT TWENTY FIVE

PLAT BOOK 16

Page 73

A RESUBDIVISION OF PORTIONS OF THE FLORIDA INDIAN RIVER
LAND COMPANY, PLAT BOOK 1, PAGE 165, IN SECTIONS 29, 30, 31 AND 32,
TOWNSHIP 29 SOUTH, RANGE 37 EAST
CITY OF PALM BAY, BREVARD COUNTY, FLORIDA

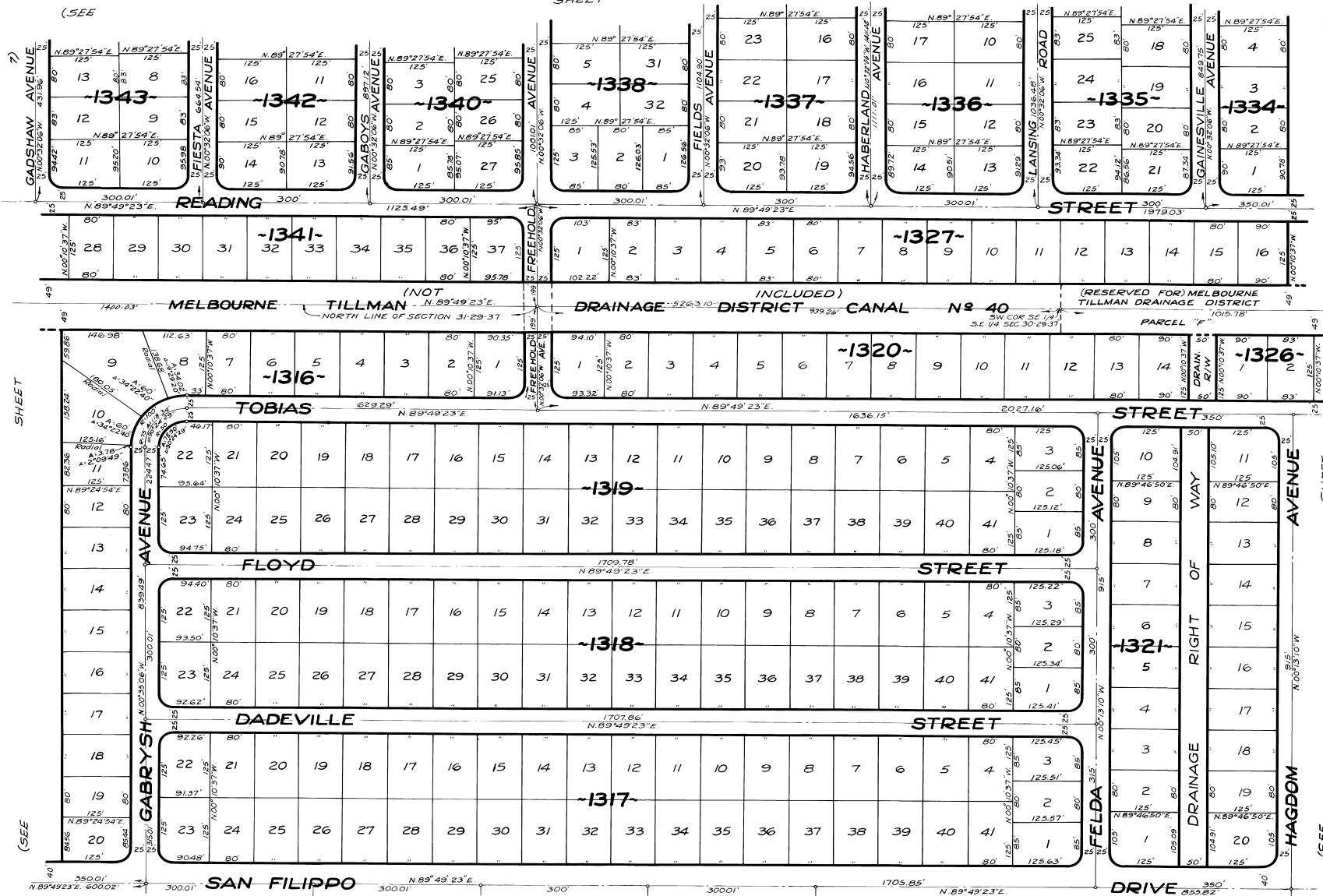
JANUARY - 1962
Scale: 1" = 100'
100 50 0 100 200 300

SHEET 6 OF 16 SHEETS

3) (SEE SHEET 4)

(SEE

SHEET



(SEE

(SEE

SHEET

9) (SEE

SHEET

10)

ARTHUR L. DAY
CIVIL ENGINEER
MIAMI - FLORIDA

CALCULATED BY: [Signature]
DRAWN BY: [Signature]
CHECKED BY: [Signature]
APPROVED BY: [Signature]

SHEET 6 OF 16 SHEETS
258 LOTS THIS SHEET

PORT MALABAR UNIT TWENTY FIVE

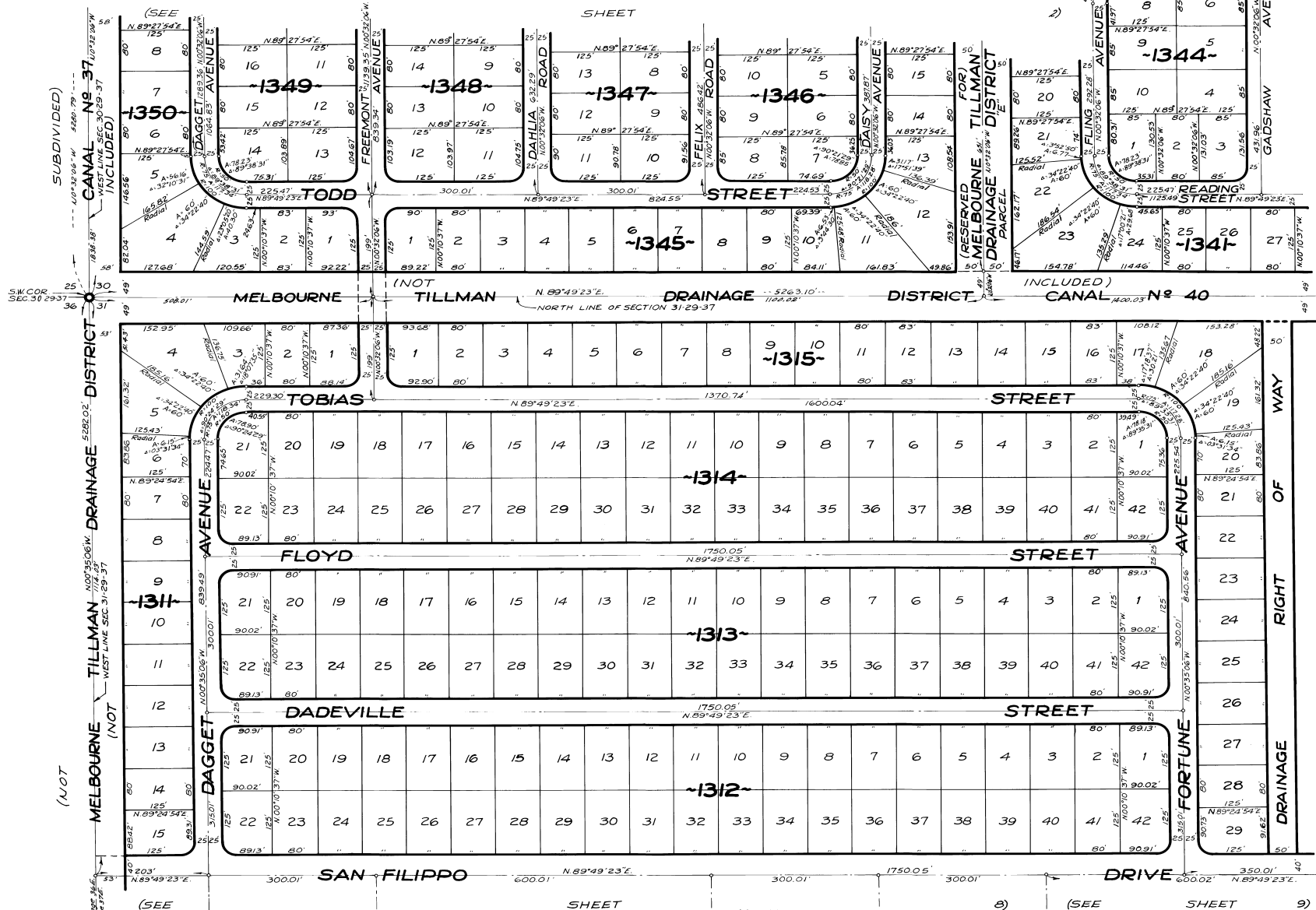
A RESUBDIVISION OF PORTIONS OF THE FLORIDA INDIAN RIVER
LAND COMPANY, PLAT BOOK 1, PAGE 165, IN SECTIONS 29, 30, 31 AND 32,
TOWNSHIP 29 SOUTH, RANGE 37 EAST
CITY OF PALM BAY, BREVARD COUNTY, FLORIDA

SHEET 7 OF 16 SHEETS

PLAT BOOK 16

Page

74



CALCULATED BY: [Signature]
DRAWN BY: [Signature]
CHECKED BY: [Signature]
APPROVED BY: CGK

JANUARY-1962
Scale: 1"=100'

ARTHUR L. DAY
CIVIL ENGINEER
MIAMI - FLORIDA

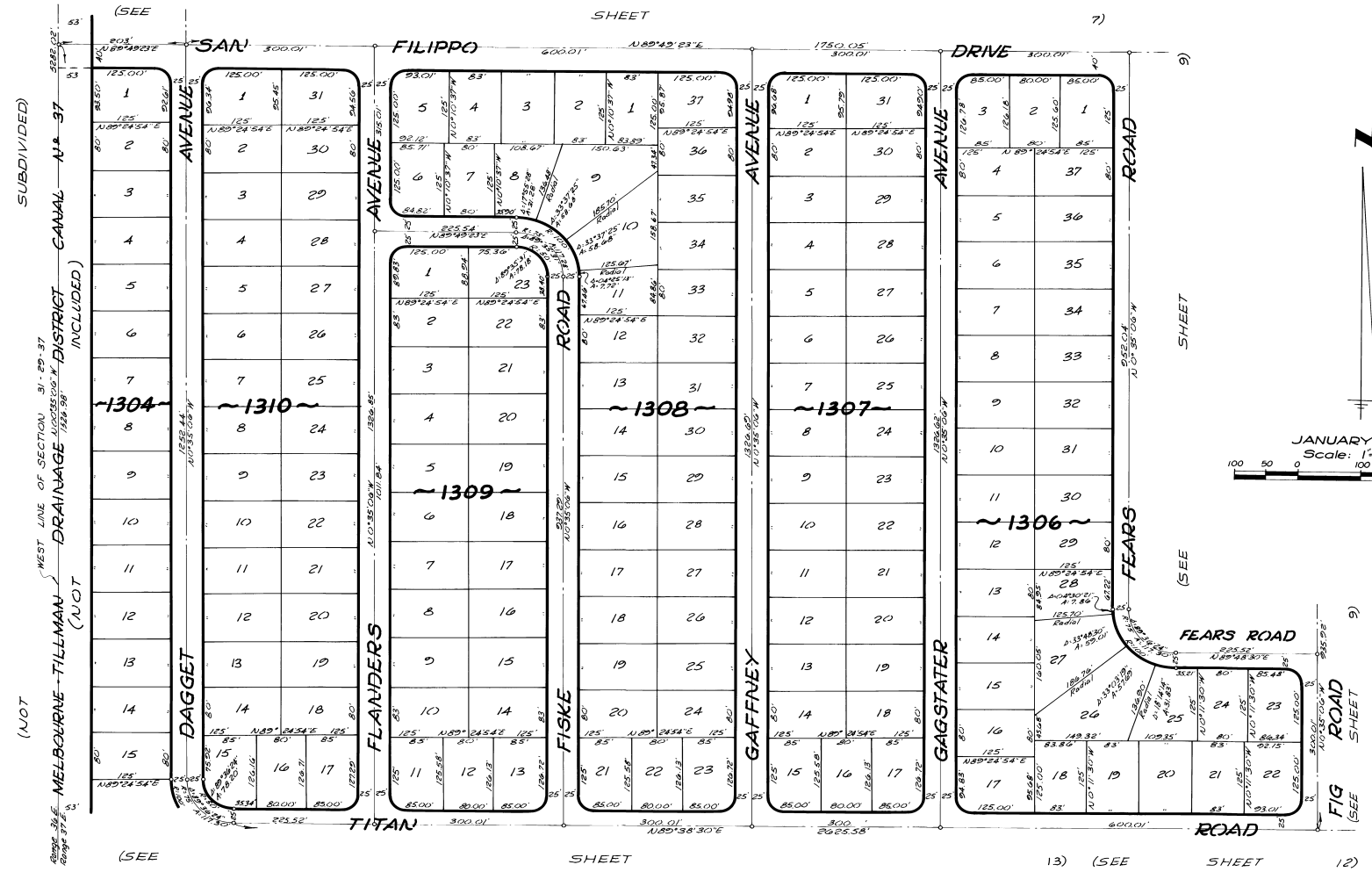
SHEET 7 OF 16 SHEETS
235 LOTS THIS SHEET

PORT MALABAR

UNIT TWENTY FIVE

PLAT BOOK 16
PAGE 75

A RESUBDIVISION OF PORTIONS OF THE FLORIDA INDIAN RIVER
LAND COMPANY, PLAT BOOK 1, PAGE 165, IN SECTIONS 29, 30, 31 AND 32,
TOWNSHIP 29 SOUTH, RANGE 37 EAST,
CITY OF PALM BAY, BREVARD COUNTY, FLORIDA
SHEET 8 OF 16 SHEETS



CALCULATED BY - AKK
DRAWN BY - URW
CHECKED BY - JB
APPROVED BY - CGK

ARTHUR L. DAY
CIVIL ENGINEER
MIAMI - FLORIDA

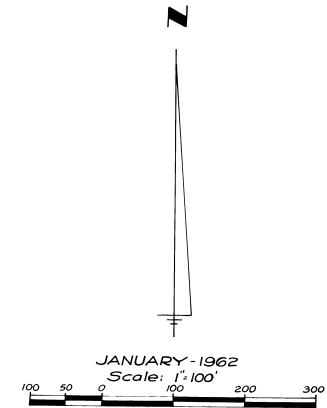
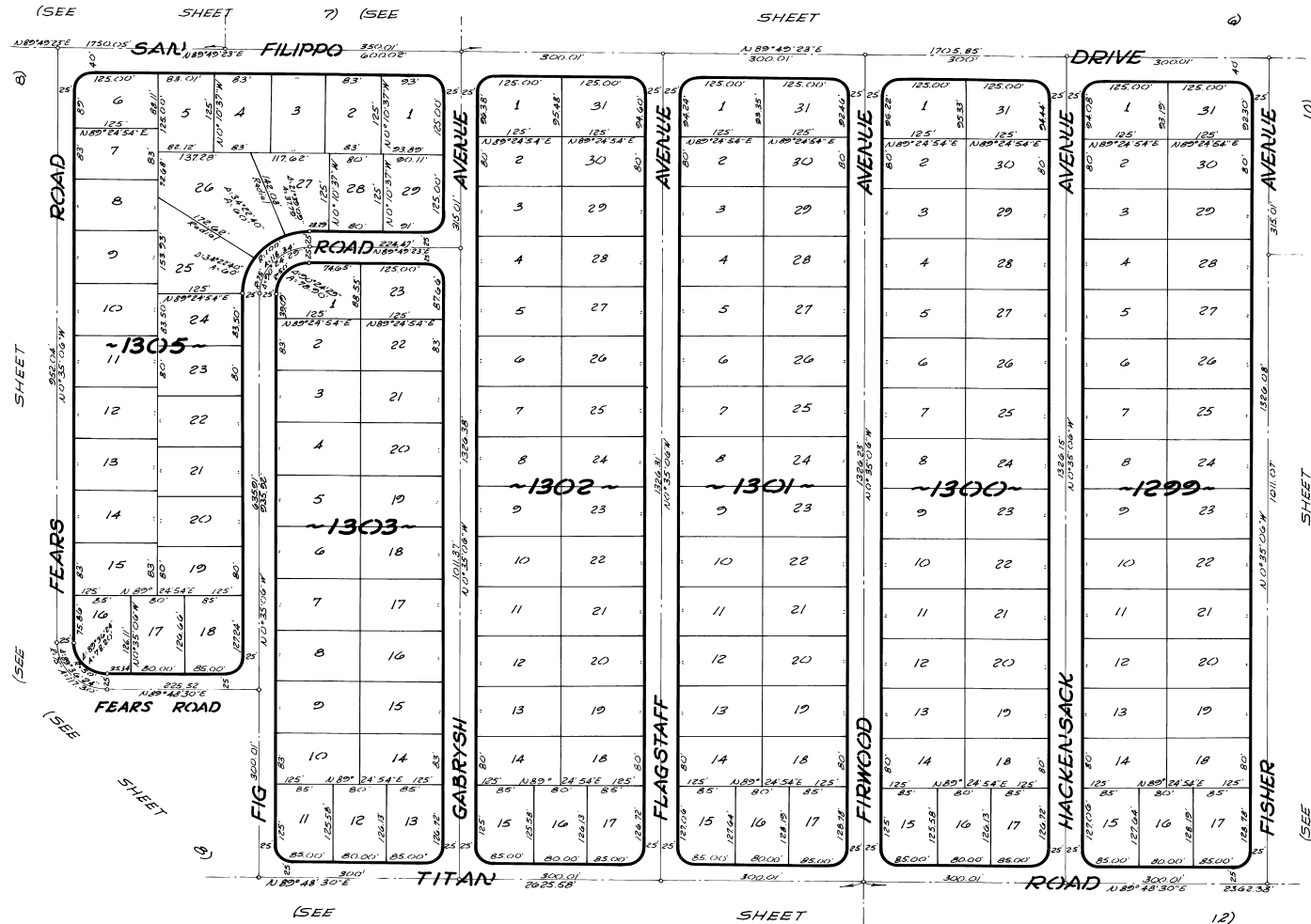
SHEET 8 OF 16 SHEETS
174 LOTS THIS SHEET

PORT MALABAR UNIT TWENTY FIVE

PLAT BOOK 16
PAGE 76

A RESUBDIVISION OF PORTIONS OF THE FLORIDA INDIAN RIVER
LAND COMPANY, PLAT BOOK 1, PAGE 165, IN SECTIONS 29, 30, 31 AND 32,
TOWNSHIP 29 SOUTH, RANGE 37 EAST
CITY OF PALM BAY, BREVARD COUNTY, FLORIDA

SHEET 9 OF 16 SHEETS



CALCULATED BY - *Ally*
DRAWN BY - J.R.W.
CHECKED BY - J.D.
APPROVED BY - C.G.K.

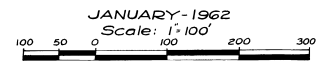
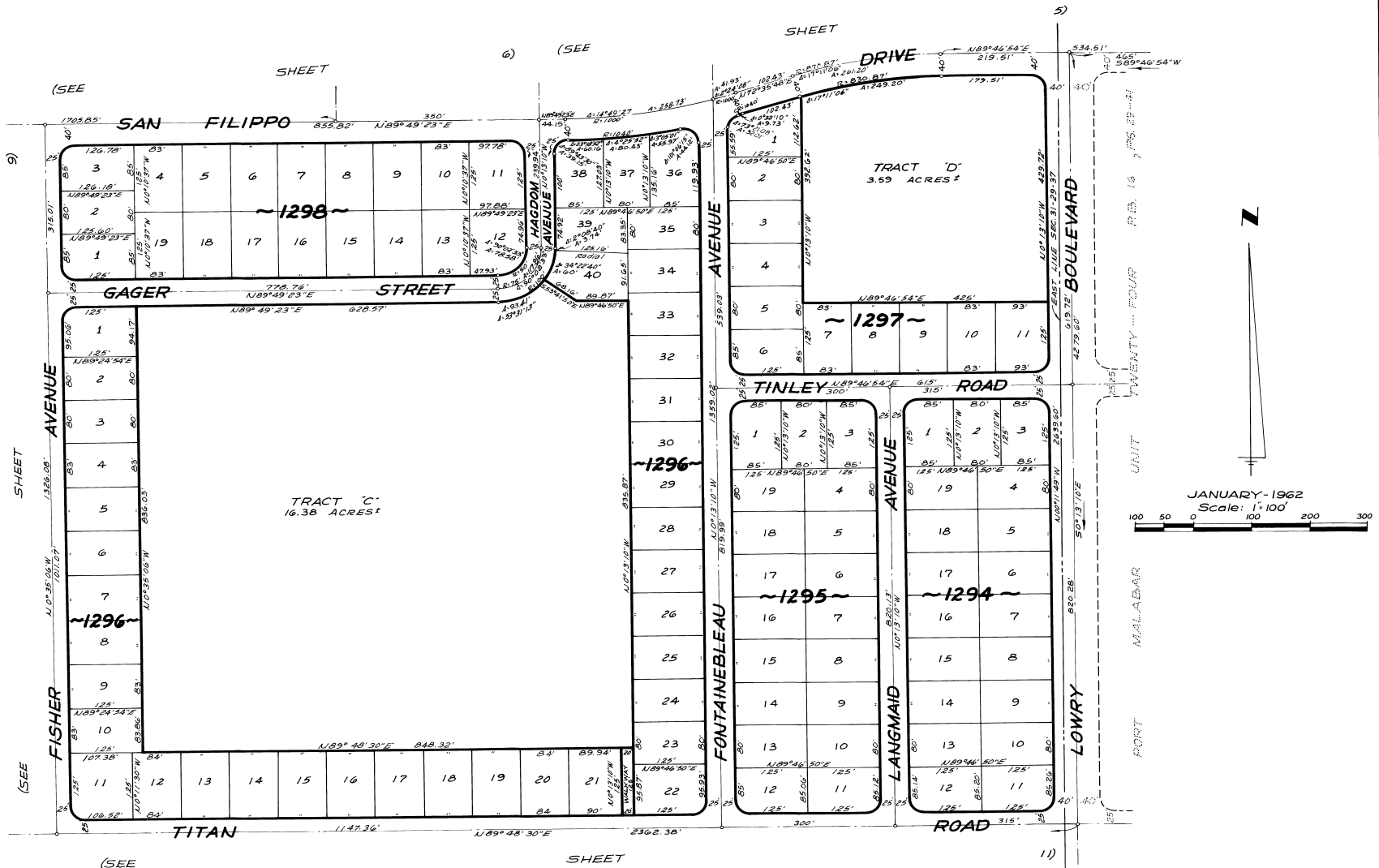
ARTHUR L. DAY
CIVIL ENGINEER
MIAMI - FLORIDA

SHEET 9 OF 16 SHEETS
176 LOTS THIS SHEET

PORT MALABAR UNIT TWENTY FIVE

A RESUBDIVISION OF PORTIONS OF THE FLORIDA INDIAN RIVER
LAND COMPANY, PLAT BOOK 1, PAGE 165, IN SECTIONS 29, 30, 31 AND 32,
TOWNSHIP 29 SOUTH, RANGE 37 EAST
CITY OF PALM BAY, BREVARD COUNTY, FLORIDA

SHEET 10 OF 16 SHEETS



CALCULATED BY - RLL
DRAWN BY - GGG
CHECKED BY - JCB
APPROVED BY - CGH

ARTHUR L. DAY
CIVIL ENGINEER
MIAMI - FLORIDA

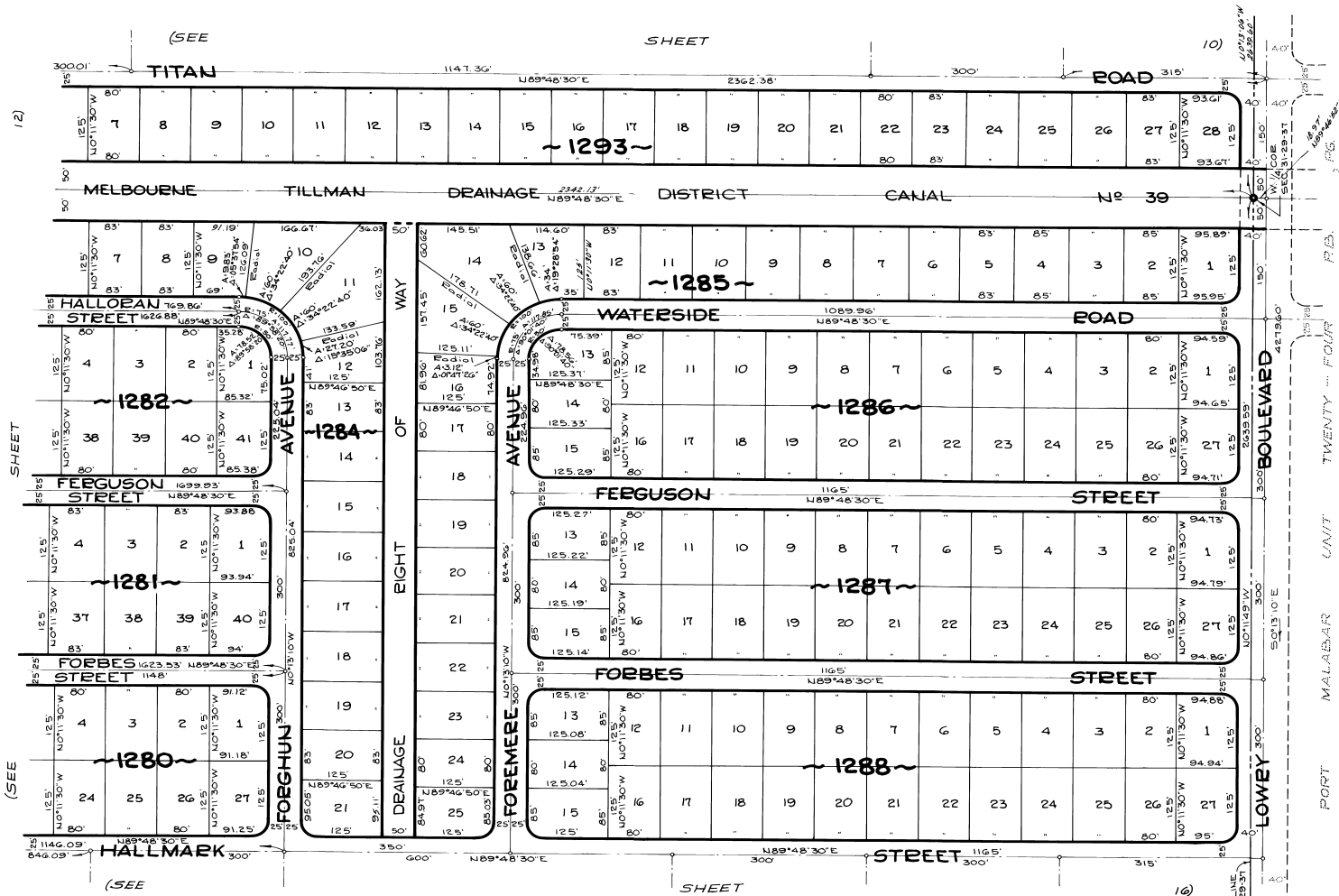
SHEET 10 OF 16 SHEETS
108 LOTS THIS SHEET

PORT MALABAR UNIT TWENTY FIVE

PLAT BOOK 16
Page 78

A RESUBDIVISION OF PORTIONS OF THE FLORIDA INDIAN RIVER
LAND COMPANY, PLAT BOOK 1, PAGE 165, IN SECTIONS 29, 30, 31 AND 32,
TOWNSHIP 29 SOUTH, RANGE 37 EAST
CITY OF PALM BAY, BREVARD COUNTY, FLORIDA

SHEET 11 OF 16 SHEETS



JANUARY - 1962
Scale: 1" = 100'
100 50 0 100 200 300

ARTHUR L. DAY
CIVIL ENGINEER
MIAMI - FLORIDA

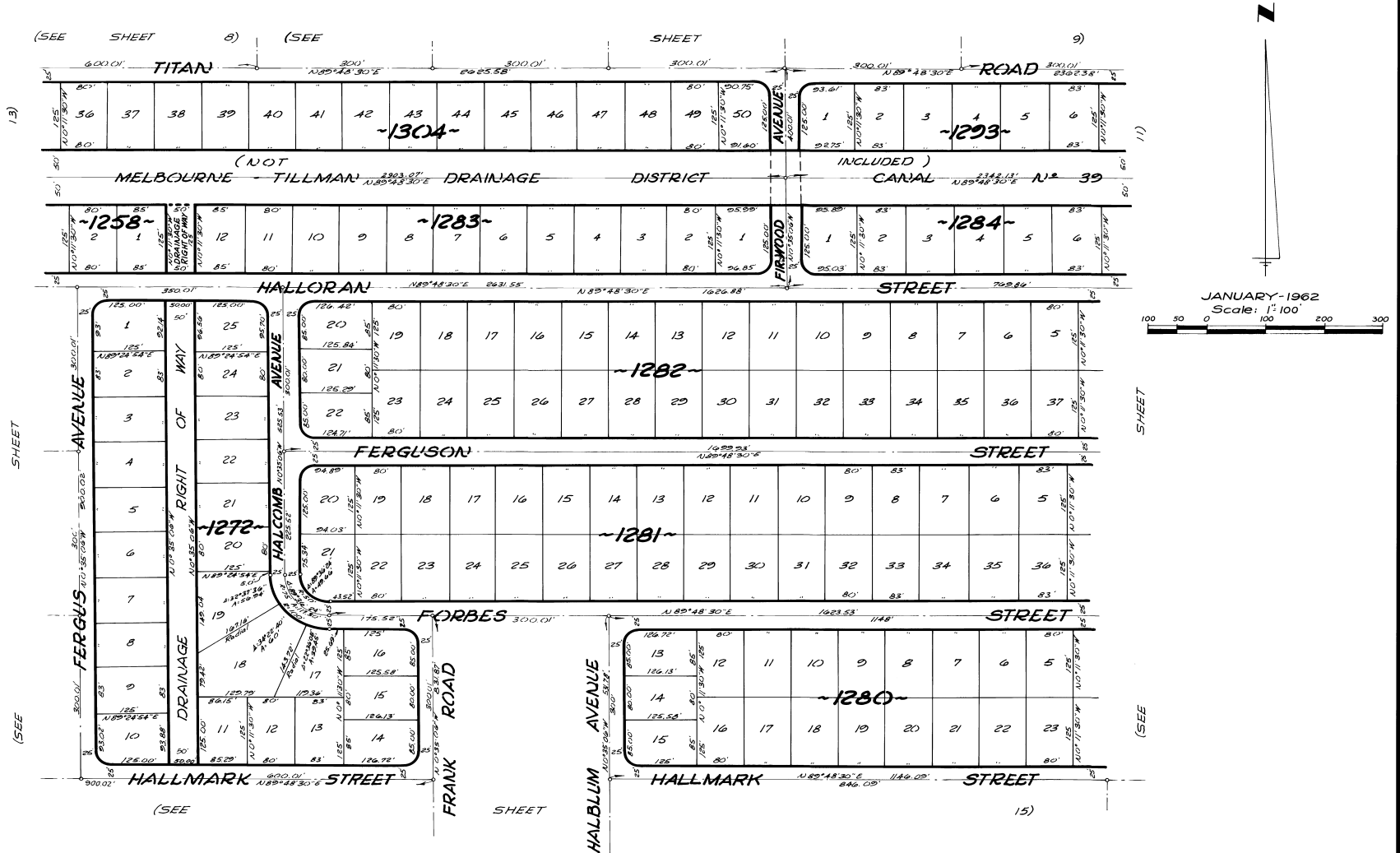
SHEET 11 OF 16 SHEETS
167 LOTS THIS SHEET

CALCULATED BY: HWT
DRAWN BY: SJP
CHECKED BY: JJP
APPROVED BY: CBH

PORT MALABAR UNIT TWENTY FIVE

PLAT BOOK 16
Page 79

A RESUBDIVISION OF PORTIONS OF THE FLORIDA INDIAN RIVER
LAND COMPANY, PLAT BOOK 1, PAGE 165, IN SECTIONS 29, 30, 31 AND 32,
TOWNSHIP 29 SOUTH, RANGE 37 EAST,
CITY OF PALM BAY, BREVARD COUNTY, FLORIDA
SHEET 12 OF 16 SHEETS



CALCULATED BY - ARB
DRAWN BY - JRM
CHECKED BY - JB
APPROVED BY - CHY

ARTHUR L. DAY
CIVIL ENGINEER
MIAMI - FLORIDA

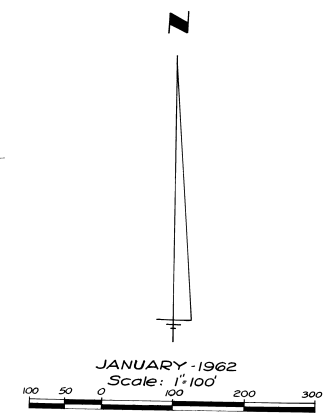
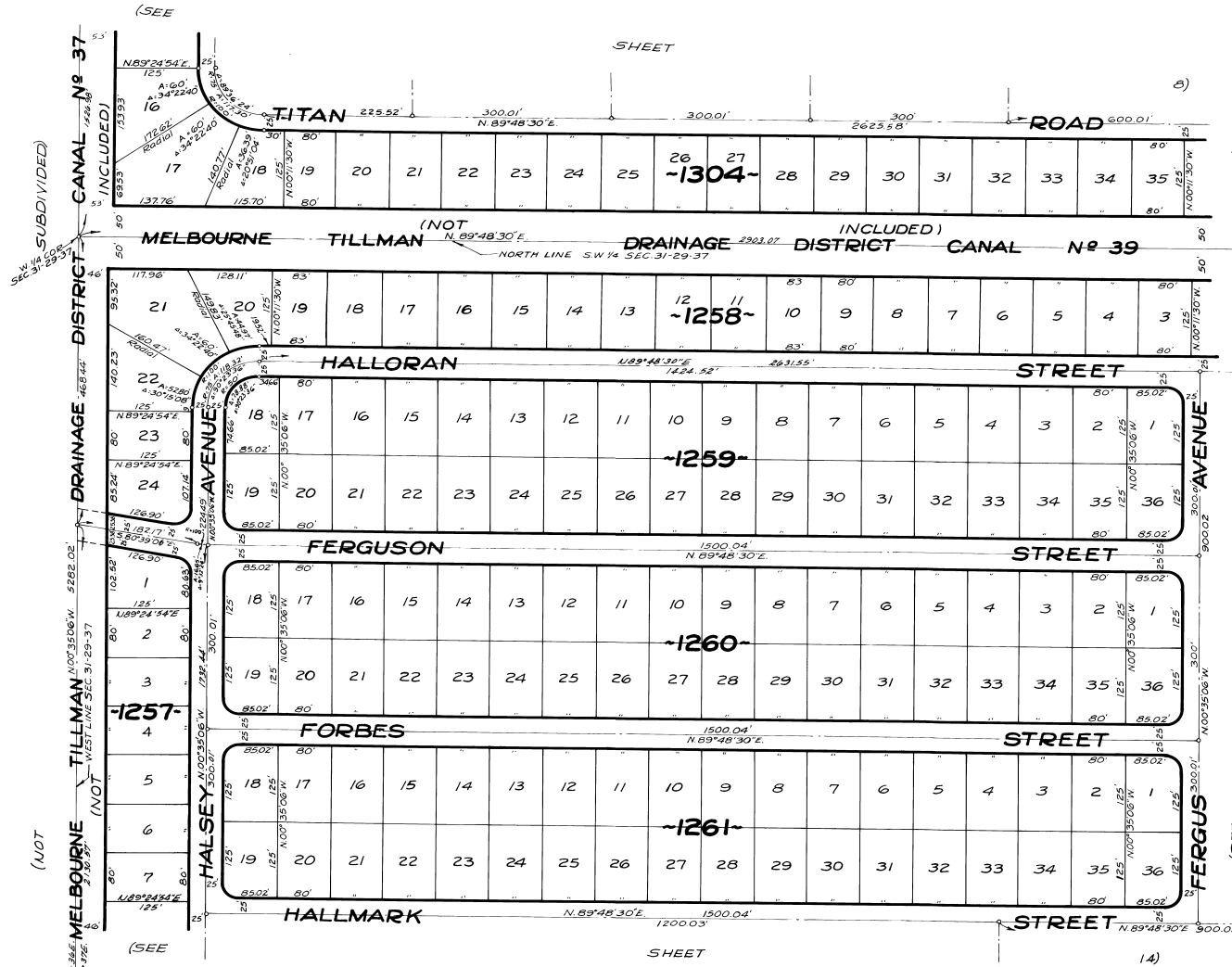
SHEET 12 OF 16 SHEETS
150 LOTS THIS SHEET

PORT MALABAR UNIT TWENTY FIVE

PLAT BOOK 16
PAGE 30

A RESUBDIVISION OF PORTIONS OF THE FLORIDA INDIAN RIVER
LAND COMPANY, PLAT BOOK 1, PAGE 165, IN SECTIONS 29, 30, 31 AND 32,
TOWNSHIP 29 SOUTH, RANGE 37 EAST
CITY OF PALM BAY, BREVARD COUNTY, FLORIDA

SHEET 13 OF 16 SHEETS



CALCULATED BY - P.H.C.
DRAWN BY - E.Z.
CHECKED BY - J.B.
APPROVED BY - G.H.K.

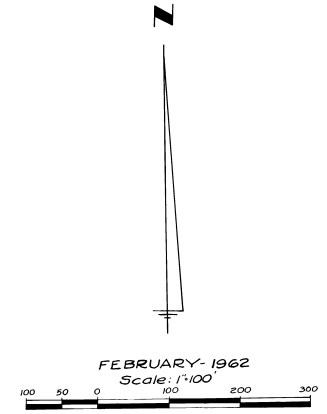
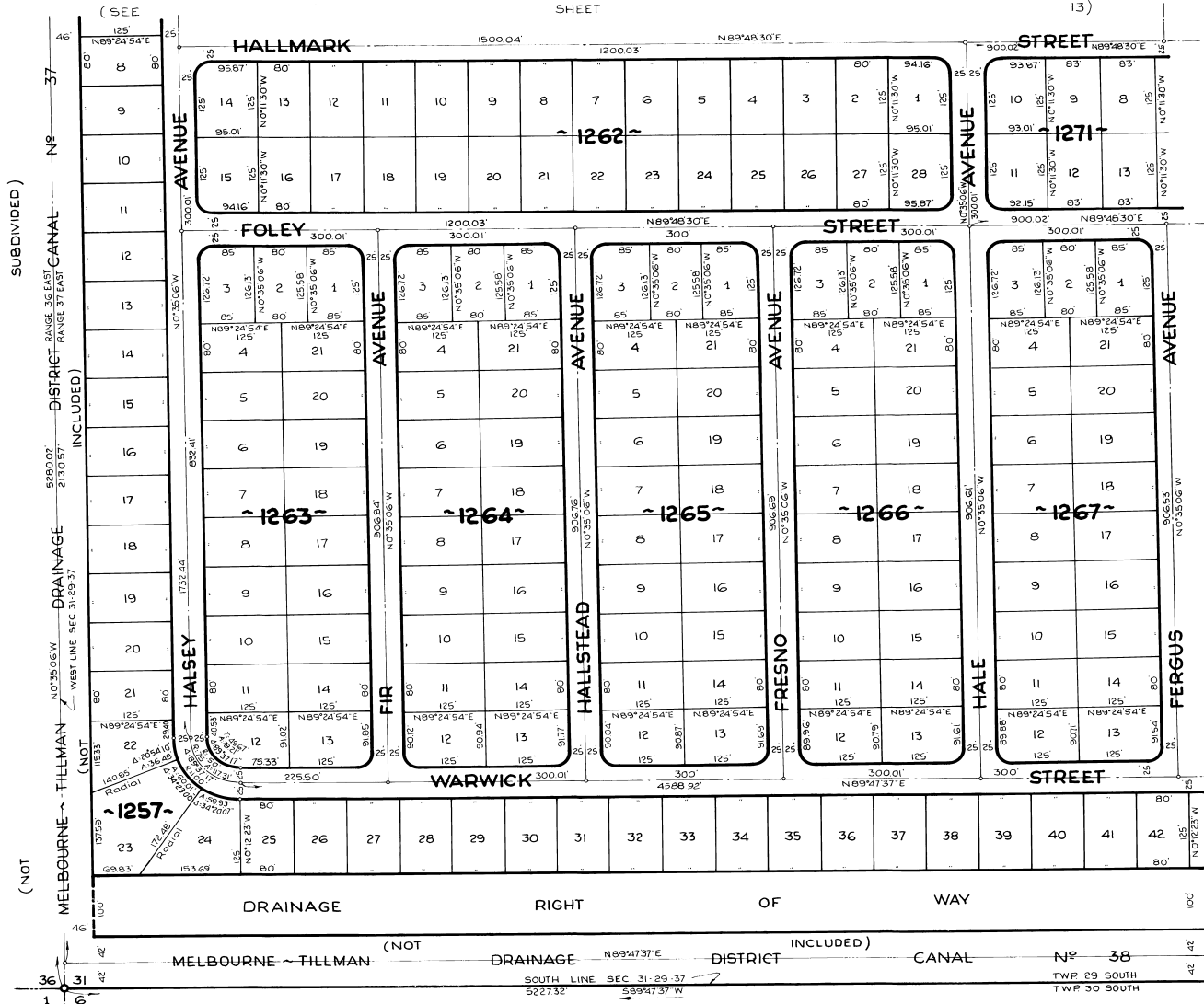
ARTHUR L. DAY
CIVIL ENGINEER
MIAMI - FLORIDA

SHEET 13 OF 16 SHEETS
157 LOTS THIS SHEET

PORT MALABAR UNIT TWENTY FIVE

PLAT BOOK 16
Page 81

A RESUBDIVISION OF PORTIONS OF THE FLORIDA INDIAN RIVER
LAND COMPANY, PLAT BOOK 1, PAGE 165, IN SECTIONS 29, 30, 31 AND 32,
TOWNSHIP 29 SOUTH, RANGE 37 EAST
CITY OF PALM BAY, BREVARD COUNTY, FLORIDA
SHEET 14 OF 16 SHEETS



CALCULATED BY - JEC
DRAWN BY - VNF
CHECKED BY - JB
APPROVED BY - GBK

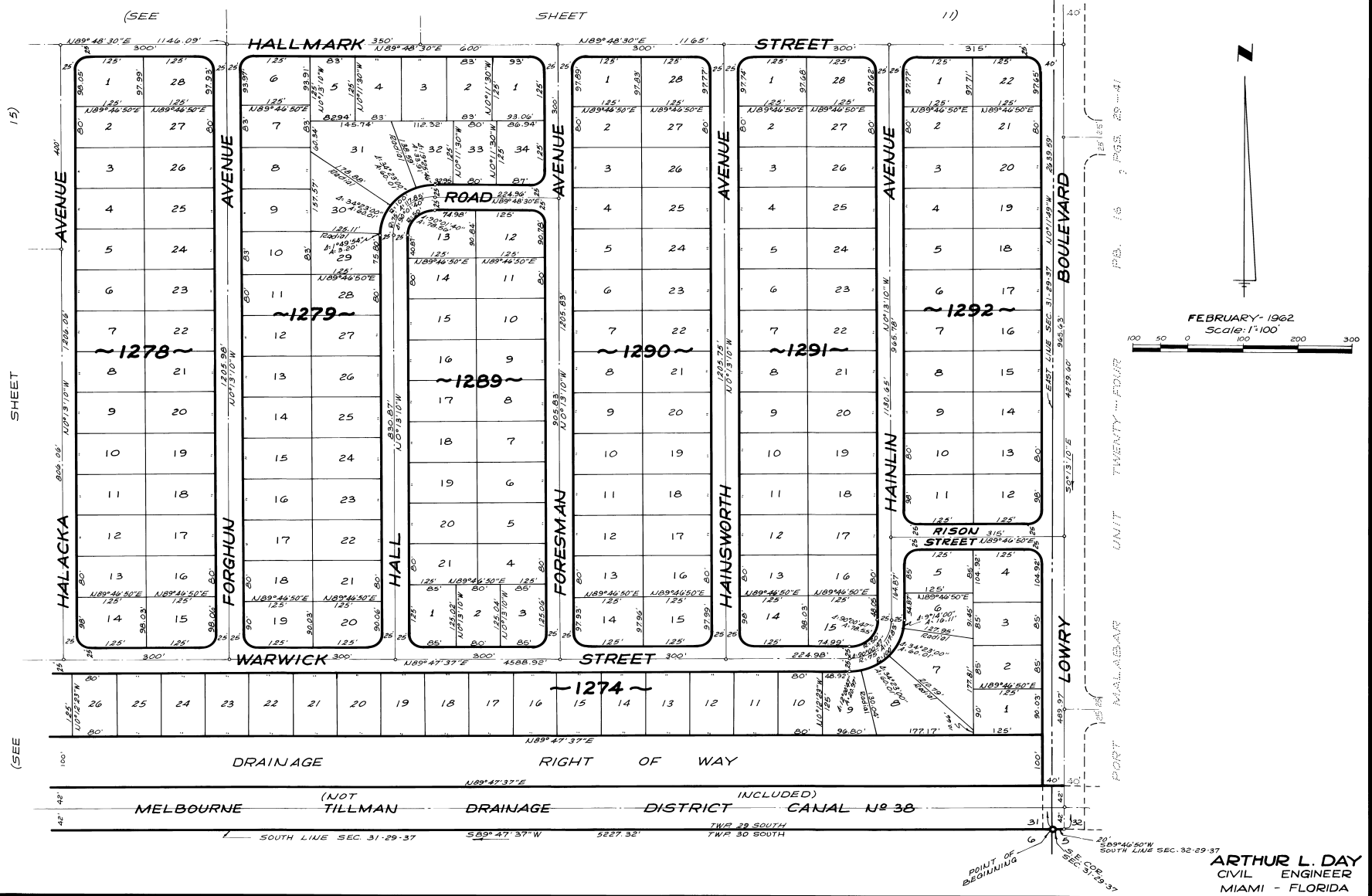
ARTHUR L. DAY
CIVIL ENGINEER
MIAMI - FLORIDA

SHEET 14 OF 16 SHEETS
174 LOTS THIS SHEET

PORT MALABAR UNIT TWENTY FIVE

PLAT BOOK 16
Page 83

A RESUBDIVISION OF PORTIONS OF THE FLORIDA INDIAN RIVER
LAND COMPANY, PLAT BOOK 1, PAGE 165, IN SECTIONS 29, 30, 31 AND 32,
TOWNSHIP 29 SOUTH, RANGE 37 EAST,
CITY OF PALM BAY, BREVARD COUNTY, FLORIDA
SHEET 16 OF 16 SHEETS



CALCULATED BY - JEC
DRAWN BY - R.C.G.
CHECKED BY - J.B.
APPROVED BY - G.H.

ARTHUR L. DAY
CIVIL ENGINEER
MIAMI - FLORIDA

SHEET 16 OF 16 SHEETS
187 LOTS THIS SHEET